

FAIRYWOOD RESIDENCES TEAM



BRIDGINGTHEGAP
DEVELOPMENT, LLC



DESMONE
ARCHITECTS



RED SWING
GROUP



CONSTRUCTION SERVICES, INC.

COMMUNITY ENGAGEMENT

Our commitment to the community for each identified project element:

Inform

• We will keep you informed.

Consult

• We will keep you informed, listen to and acknowledge concerns, and provide feedback on how public input influenced the decision.

Involve

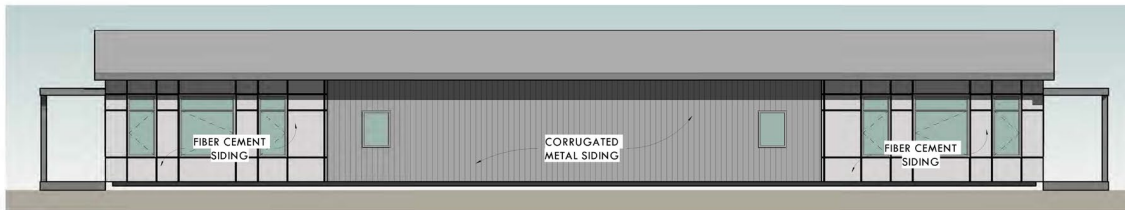
• We will work with you to ensure that your concerns are directly reflected in the alternatives developed and provide feedback on how public input influenced the decision.

Collaborate

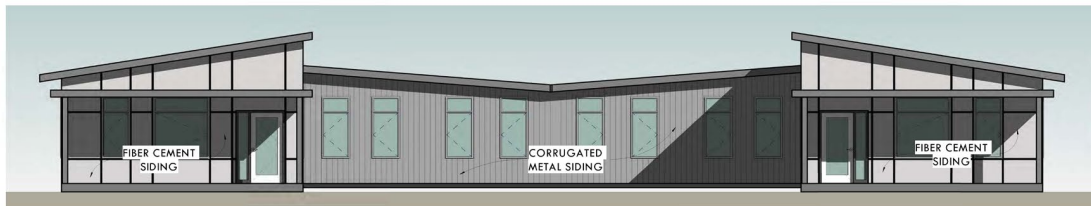
• We will look to you for advice and innovation in formulating solutions and incorporate your advice and recommendation into the decisions to the maximum extent possible.

Empower

• We will implement what you decide.



REAR ELEVATION - 2 BEDROOM
1/4" = 1'-0"



PROJECT SUMMARY

- SUSTAINABLE PASSIVE HOUSE DEVELOPMENT
- SENIOR COMMUNITY CENTER

TOTAL UNITS

38

TOTAL COMMUNITY INVESTMENT

\$13M

RESIDENTIAL 1BR UNITS

16 (40%)

RESIDENTIAL 2BR UNITS

22 (60%)

CONSTRUCTION M/WBE PARTICIPATION:

25% Certified MBEs 10% Certified WBEs

SURFACE LEVEL PARKING LOT

42

GUEST PARKING SPACES

15

Public Transit Via Bus Shelter Directly on Site