



Greater Pittsburgh Coliseum Development

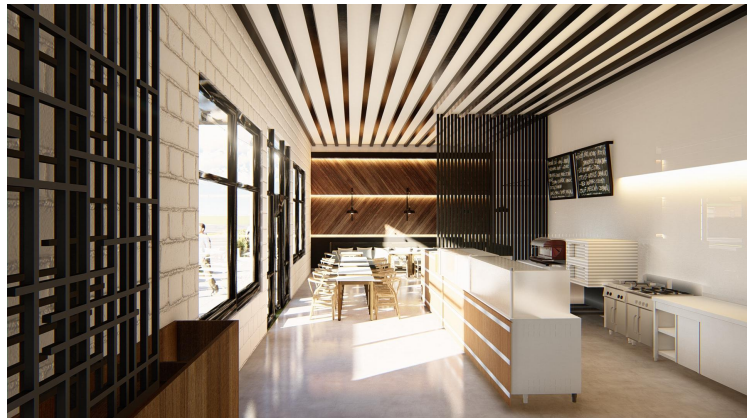
The proposed development is threefold:

- Flex Community Space
- Vocational School for Advanced Manufacturing
- Conturo Prototyping Headquarters

After the development of the Greater Pittsburgh Coliseum the facility will house spaces for civic and cultural engagement, educational workshops, training in manufacturing and an established manufacturing business with a clear hiring strategy that brings equitable and attainable career paths to the neighborhood of Homewood.

Flex Community Space:

Our vision includes the revitalization of the premises behind the Frankstown facade to one of its former uses as a community space or industrial kitchen. The facade along Frankstown Avenue could be opened up with large windows and garage doors to let in natural light and create a friendly and inviting space for the community to gather for fresh, healthy and affordable



food. Due to the other parts of the development, we would be able to offer the space to an interested local caterer or restaurant at very low costs. The flex space could be rented by residents for family or business events or used for bigger community gatherings like food festivals, holiday celebrations, etc. The amenities of the space could include a black box theater with a stage next to a garage door that could be opened to host a larger group outside for a block party-style event. With the neighboring vocational school and its amenities, the space could also be used for all types of workshops and training e.g. classes about nutrition, art, entrepreneurship and business, or other topics relevant to the residents of Homewood. The community space will have a separate entrance on Frankstown Avenue

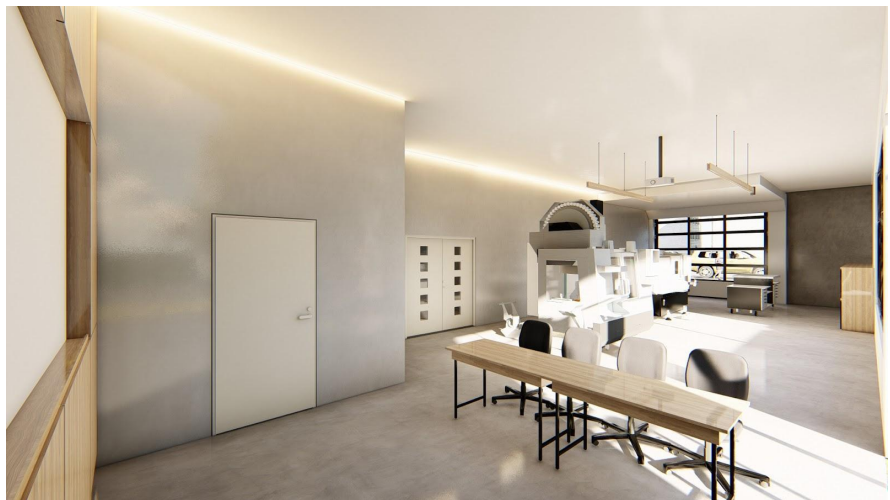
and guests will be welcome to use the public parking spots in the lot. For the kitchen we will revitalize the existing infrastructure of the old industrial kitchen. The existing bathrooms in



that area will be upgraded and modernized. The renovations of the space include removing the drop ceiling to expose the trusses and duct work to make the space feel modern and to give it an industrial feel which matches the rest of the building's purpose as manufacturing space.

Vocational School for Advanced Manufacturing:

The space that is located on the north-west corner of the Coliseum will be turned into a vocational school for advanced manufacturing. Conturo Prototyping has teamed up with an existing vocational school that is located outside of Pittsburgh and will be able to use their existing curriculum, staff and



business relationships they have created over the years. Our expertise in CNC machining will help to elaborate upon the curriculum and add more advanced machining courses. The plan is to offer classes to interested students of all ages and without limitations to previous knowledge or experience in manufacturing.

The Homewood community currently does not have a manufacturing vocational school that is accessible to residents. By adding large windows to the facade we want pedestrians to look into the training facility and get interested and inspired to join our program. We will use

the already existing entrance on Frankstown Avenue to welcome students with a front desk. The garage door to the parking lot can be opened up and will give access to the outside sitting area. The student will get hands-on practice on the two CNC machines in the school facility. We will also include a small classroom with tables, seats and a projector, and a separate bathroom.



Conturo Prototyping Headquarters:

The majority of the Coliseum will be the new headquarters of Conturo Prototyping, a CNC machine shop that serves the tech community in Pittsburgh and beyond with precision machined parts. Starting as a one-man shop in a 1000 sq ft space, our business has grown into an established operation which generates \$4 million in annual revenue, has two locations and a team of 32 people. One of our main objectives for the next five business years is to acquire a building to move the shop into and set up a long term presence. We envision bringing the building back to its original use and transferring it back into a manufacturing space in the heart of Homewood. The building layout is already perfect to fit our operations and still leaves enough space to incorporate the two developmental plans as described. Our state of the art machines and operational procedures are energy efficient and not harmful to the environment or neighboring residents.

The development of headquarters would include:

- Shop Floor with 40+ CNC mills and lathes,
- Open concept offices and conference room,
- Kitchen / Break Room,
- Quality Control Lab,
- Receiving and Shipping Areas,
- Glass Lobby/Entrance (added to the existing floor plan).

The plan is to add windows to the south-facing facade of the building to let natural light into the shop floor and to make our operations visible to pedestrians from Felicia Way. Part of

the bathrooms will be demolished and added to the open floor plan office space to accommodate our growing workforce. The smaller rooms in between the shop floor and community space will serve Conturo Prototyping as kitchen / break room, tool room and quality control lab. The space on the southwest corner of the building with the garage door will function as a shipping and receiving area.

The renovations of the space includes replacing the existing HVAC systems, pouring concrete foundations for our CNC machines, refinishing the floors, renovating the office space and bathrooms, removing the drop ceilings to expose the trusses and duct work to match the industrial feel of the building. The addition of the glass lobby will be a showstopper. It will draw attention to the Coliseum and will spark interest among the residents about our operations and manufacturing in general.



Renderings

Exterior



Aerial View of North-Western corner of the Coliseum showing the vocational school, community space and lobby to Conturo Prototyping



North-Western corner of the Coliseum showing the vocational school, community space and lobby to Conturo Prototyping



Garage door to vocational school and outdoor seating area



Entrance lobby to Conturo Prototyping



Aerial view of Entrance Lobby and Parking Lot



North facade on Frankstown Avenue with community art work and windows and entrance to the flex community space

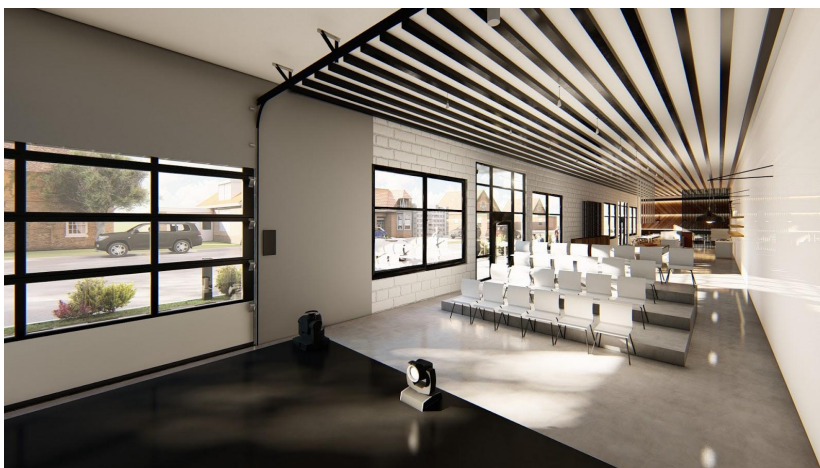
Flex Community Space



Community space / restaurant area



Community space / restaurant area



Community space / stage area

Vocational School

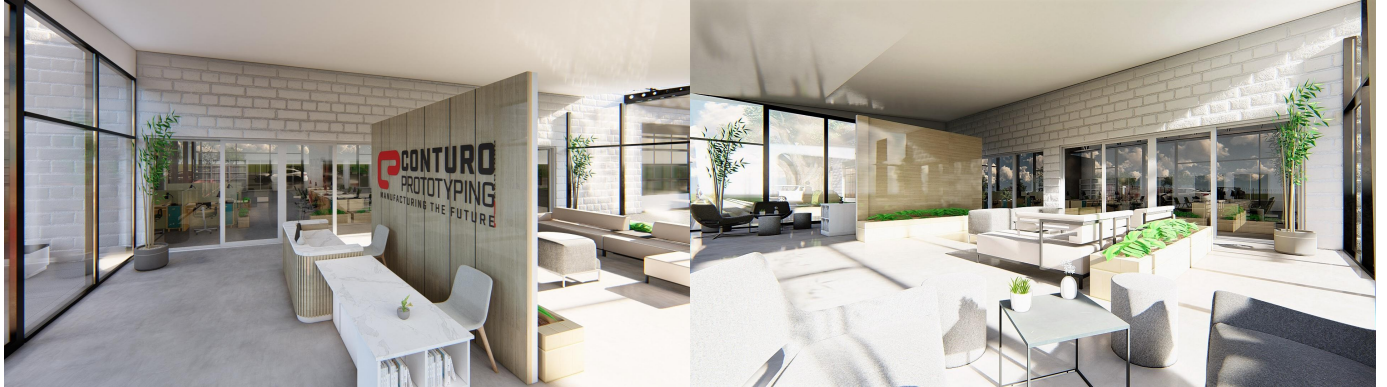


Classroom Area



Machining Area

Conturo Prototyping Headquarters



Entrance Lobby Area



Office Area



Shop Floor